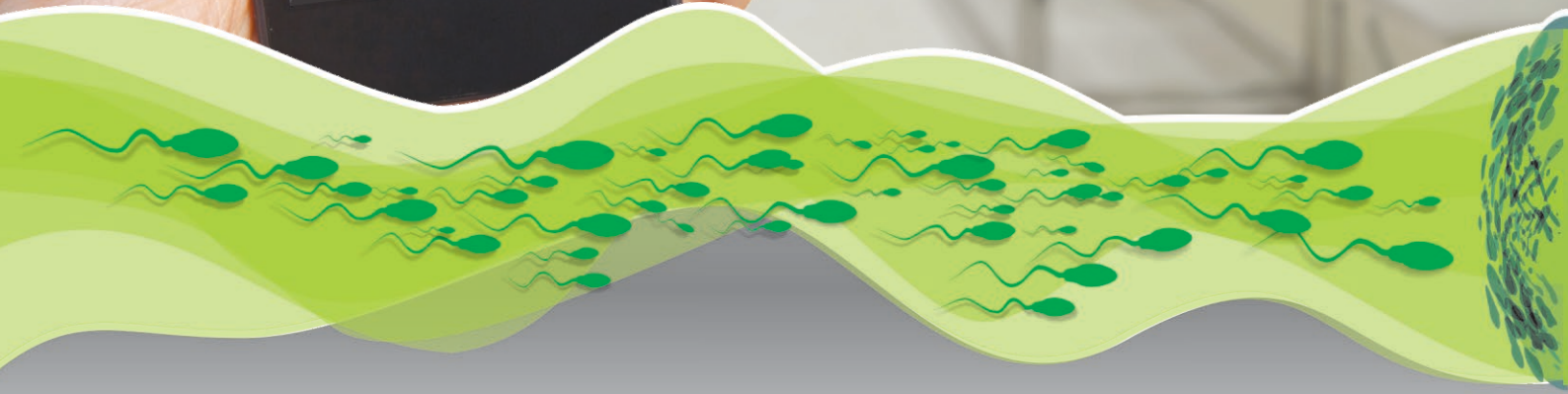




## *IOT Technologies for optimum Gamete safety*



A new generation IOT enabled Smart Monitoring System for IVF Labs



## A New Generation IOT enabled Smart Monitoring System for IVF Labs

Labcare monitoring and alarming system is designed based on IOT Technology to fulfill growing regulatory compliance and quality control needs in IVF Labs. The system has direct interface with embryologists and doctors through dedicated APP supported by Cloud computing services. Critical embryo culture parameters are continuously measured and reflected in real time on any Smart Device through dedicated APP.

The system comprises Labcare Console and Labcare Gateway with its State of the Art design. It works on WIFI network and it does not need LAN network or Radio frequency network. Labcare is universal and is suitable for range of Box type and Bench top type CO2 Incubators such as Heracell, Astec, Cook-Minc, ESCO, Planer, K-systems and Binder. Other Incubators will be added soon.



IOT Technology works on WIFI network and can cover long distance and range of devices.



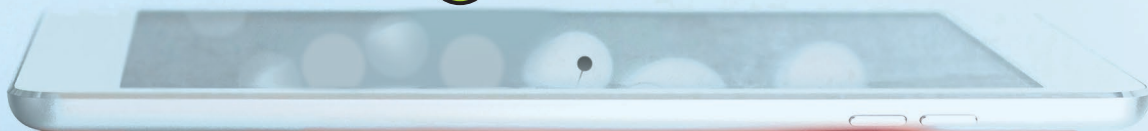
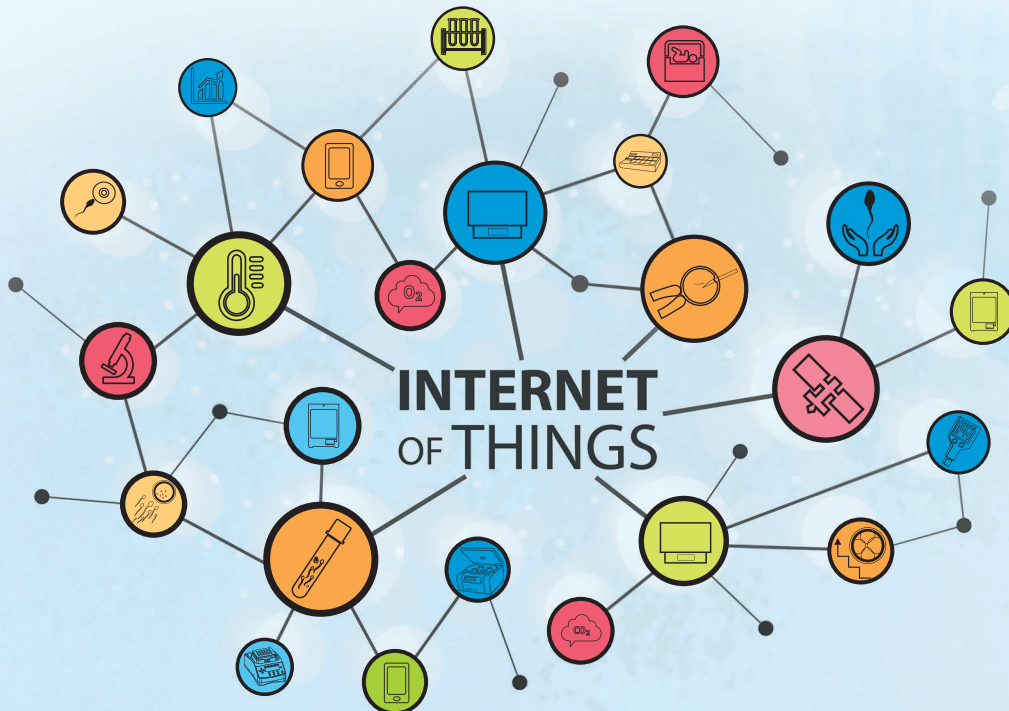
The system provides multiple Alarms in real time on Smart Phone via SMS, Email, Voice Call.



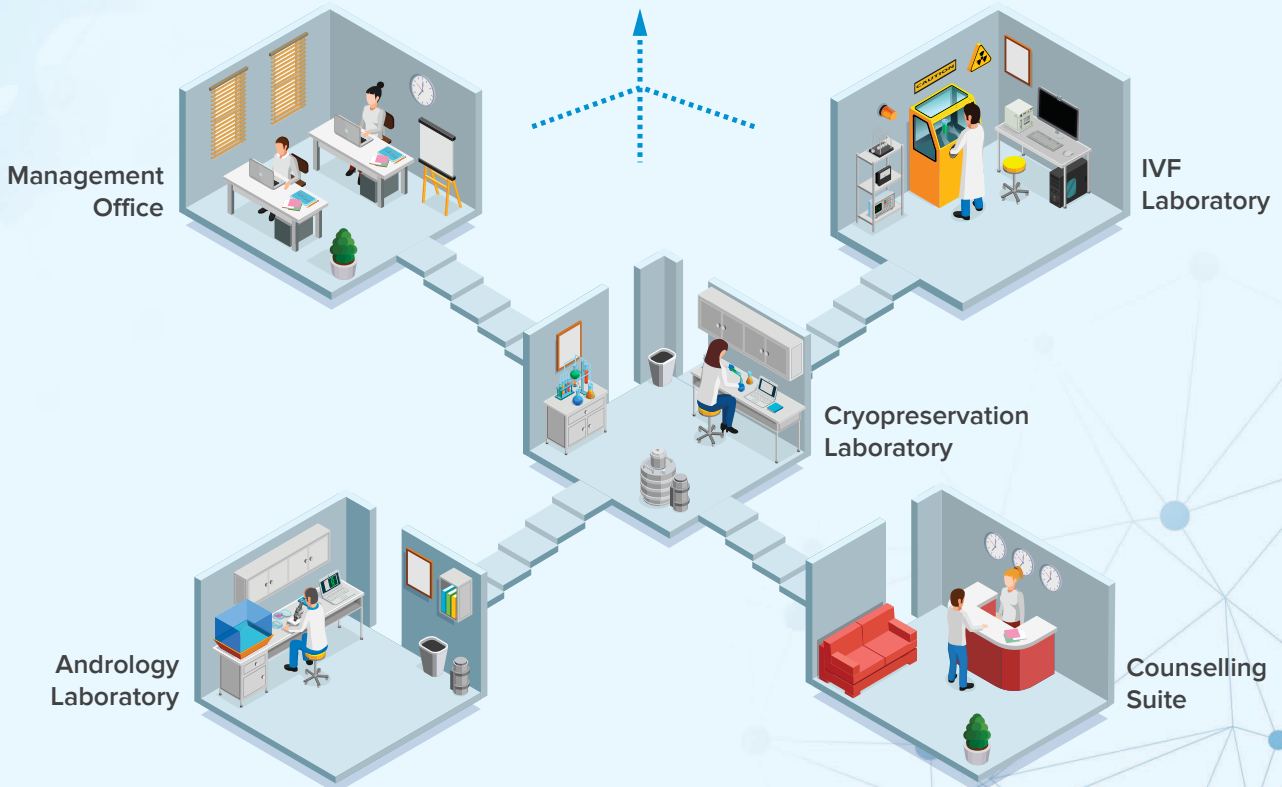
State of the Art Design allows 4 Incubators to be monitored thus lowering cost substantially. First year Cloud Server charges are also included in the cost.



The system works through cloud computing and does not require SIM Card or LAN, Voice Call, Email and SMS are sent through Cloud Server.



**An IOT Platform  
for intelligent future**





### DIAGNOSTIC SCREEN

- It helps the user to diagnose the connectivity of Labcare Console box with gateway with Incubator
- It helps the user to diagnose the net connectivity and the connectivity of Labcare with Cloud Server



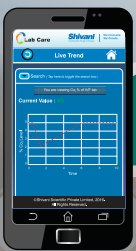
### HOME SCREEN

- An user-friendly home screen which guides you to the info required



### LIVE ALARM

- This screen will help you know the alarms triggered
- Details of alarm will be displayed
- User can select Incubator center wise and see the alarm triggered



### LIVE TREND

- User can view the real time trend of the CO<sub>2</sub>, temperature and other parameters
- It will always show you last 45 minutes data trend



### LIVE DASHBOARD

- It shows you the live values in real time
- User just needs to select the Incubator
- User can view set point as well as current value



## Track and manage the Gametes on the move

Bringing any extra safety for gametes in your IVF Lab requires significant involvement of the Lab Staff, as the embryologist has to perform not only routine clinical tasks but also regulatory paper work. Moreover the modern IVF Lab medical devices require additional attention in terms of IT, Software, Calibration, Validation and Witnessing to name a few. The dedicated Labcare APP provides freedom to Embryologists and Lab Staff to remain Stress Free by being in touch with all the CO2 Incubators where critical gametes and embryo culture is taking place. So in real sense embryologist can track and manage gametes and embryos on the move.



### HISTORICAL TREND

- 📶 User can view the historical trend
- 📶 User can customize the view screen by selecting day and time
- 📶 User can view the trend of individual parameters
- 📶 User can view last 3 days historical trend

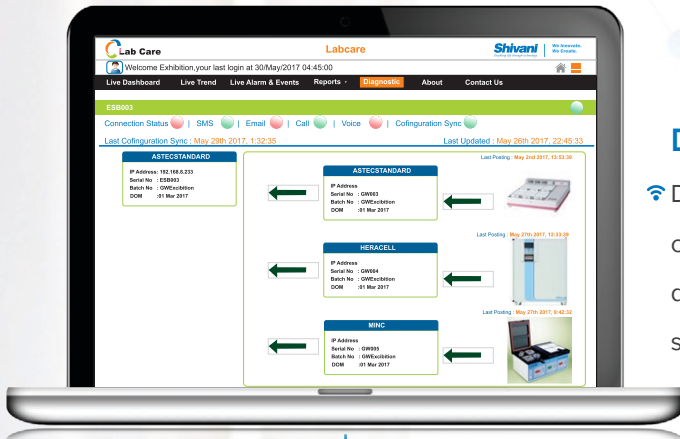
## Remote Multiple site monitoring – Smart, Safe and Secure data

The Labcare provides complete flexibility of managing multiple IVF Labs and will provide you pin point accuracy that which Incubator is showing which parameters. The APP has features which provide multiple locations and multiple CO2 Incubators to be tracked simultaneously.

The system provides 4 Mobile numbers and 4 Email ids to be kept under single loop whenever alarm is triggered.

Lab Directors, Operation Managers and CEOs can visualize multiple locations and multiple CO2 Incubators simultaneously across all devices.



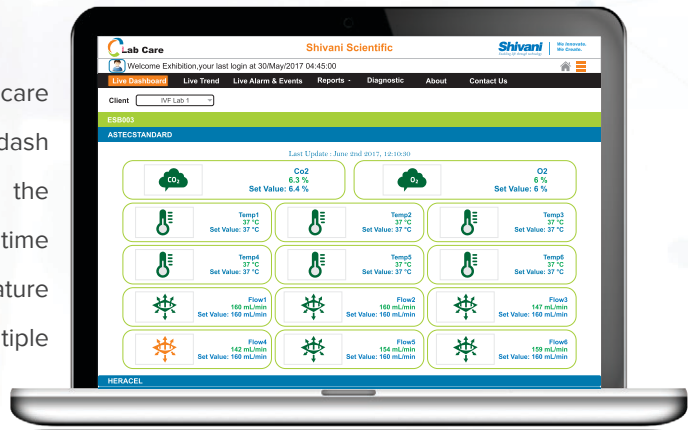


## Diagnostic screen dashboard

Diagnostic screen dashboard lets the user know if the connections are secure and if any notification facility is disabled. So it lets the user know the IP details, machine serial number etc.

## Real time value dashboard

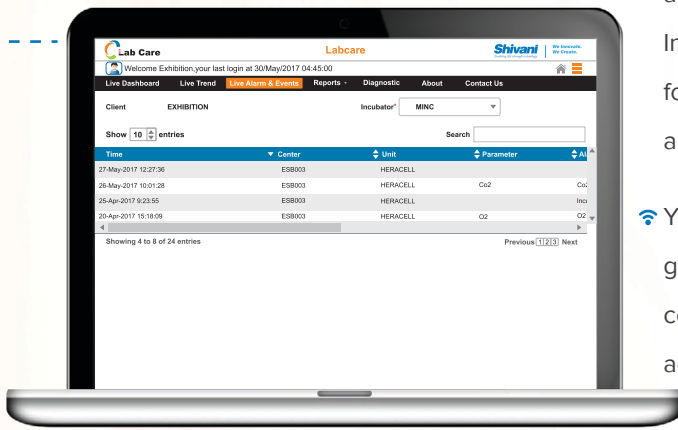
**Live Dashboard:** Once you login to Labcare web via [www.ivflabcare.com](http://www.ivflabcare.com), you land to dashboard. On selecting the centre and the Incubator, you will be shown live real time values with time update. It also has a feature where in the same user can see multiple centres in a single login.



## Report generation and configuration dashboard

There are options of generating various reports by which a doctor or a centre head can monitor the activities of the Incubator. You can generate historical data in excel format. You can generate trends from the specified date and see the Incubator performance

You can generate reports of alarms and events generated for incubators. Alarms and events can be configured as per customer requirement, with DND activation



Available on



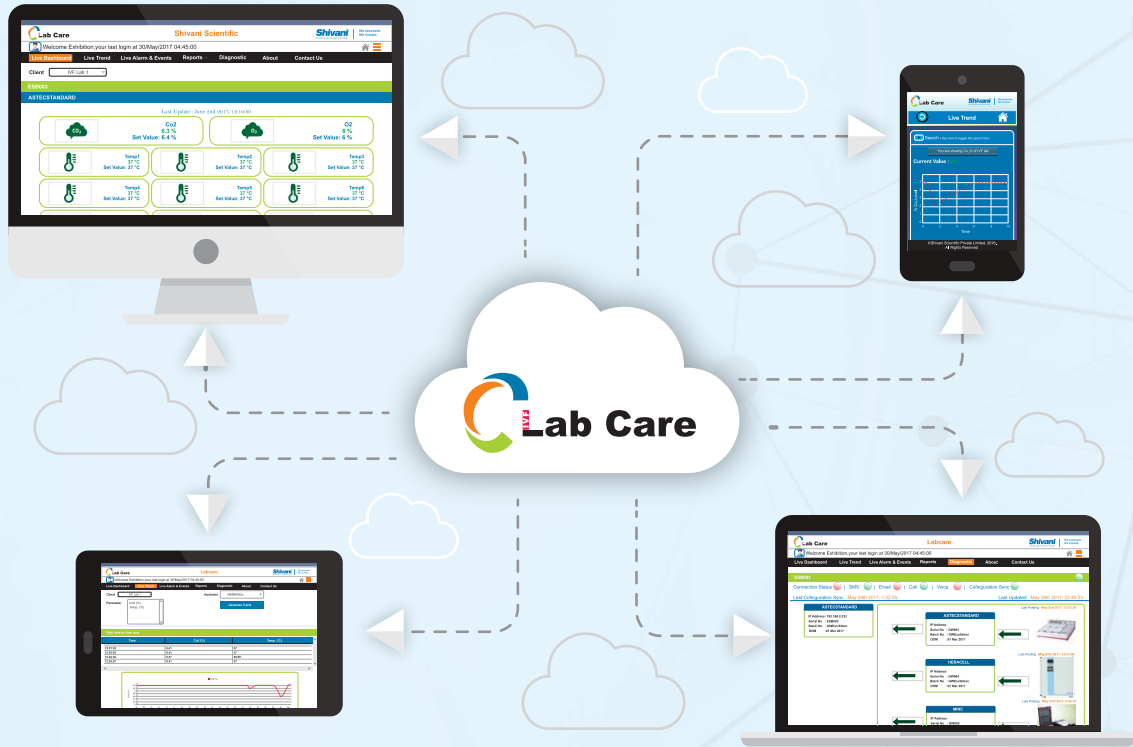
Android App\*  
(Direct download)



iOS App\*  
(Through link)

## Across all the devices

IOT Technology and Labcare control design at Labcare dedicated APP makes it possible for users to view, monitor and review alarms and events across multiple devices giving seamless working environment. The devices can be Mobile, Tablet, Laptop or Conventional Desktop.



System configuration: Ordering code

Product name	Description	Order code
Labcare Console	Labcare Console with two gateways with one year cloud charges 230VAC	LC10012
Labcare Console	Labcare Console with two gateways with one year cloud charges 110VAC	LC10013
Labcare Gateway	Labcare Gateway 230VAC	LC1003
Labcare Gateway	Labcare Gateway 110VAC	LC1004
Cloud Server	One year Cloud Server charges for one gateway	LC1011

**Shivani**  
Enabling life through technology

**We Innovate.  
We Create.**

ISO 9001 : 2015 | ISO 13485 : 2003 | CE

**Shivani Scientific Industries (P) Ltd.**

Shivani House, 26/A, Raju Industrial Estate, Penkar Pada Road, Mira 401 104, Dist. Thane (Mumbai), India

Tel.: +91 22 2896 1768 / 2896 6770 / 2897 6769 | Fax : +91 22 2896 6766

Email : marketing@shivanscientific.com | Website : www.shivaniIVF.com / www.ivflabcare.com